



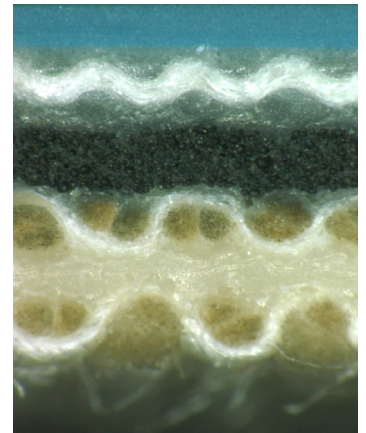
## STREB PERFORMANCE LINE – PRINTING BLANKETS IN PERFECTION

# STREB PERFORMANCE WEB

<b>Segment</b>	Webfed Offset
<b>Application</b>	Commercial Heatset Web For highspeed heatset presses of all press manufacturers For all kind of substrates

### Features

- \* Improved paper wastage control
- \* Optimized paper feed tension
- \* Reduced risks of paper breaks
- \* Easier control of colour register during the print start-up
- \* Superb paper release properties
- \* Stable neutral paper feed
- \* Excellent shock absorption characteristics
- \* Precise dot reproduction and solids



### Technical specifications

Thickness	1.70 ± 0.02 mm (also available as 1.95mm version)
Colour	Blue
Fabric Plies	3
Compressible Layer	closed cells
Tensile Strength	90 N/mm
Compressibility at 100 N/cm <sup>2</sup>	4 %
Overall Hardness	81 Shore A
Surface Roughness [Rz]	6 µm